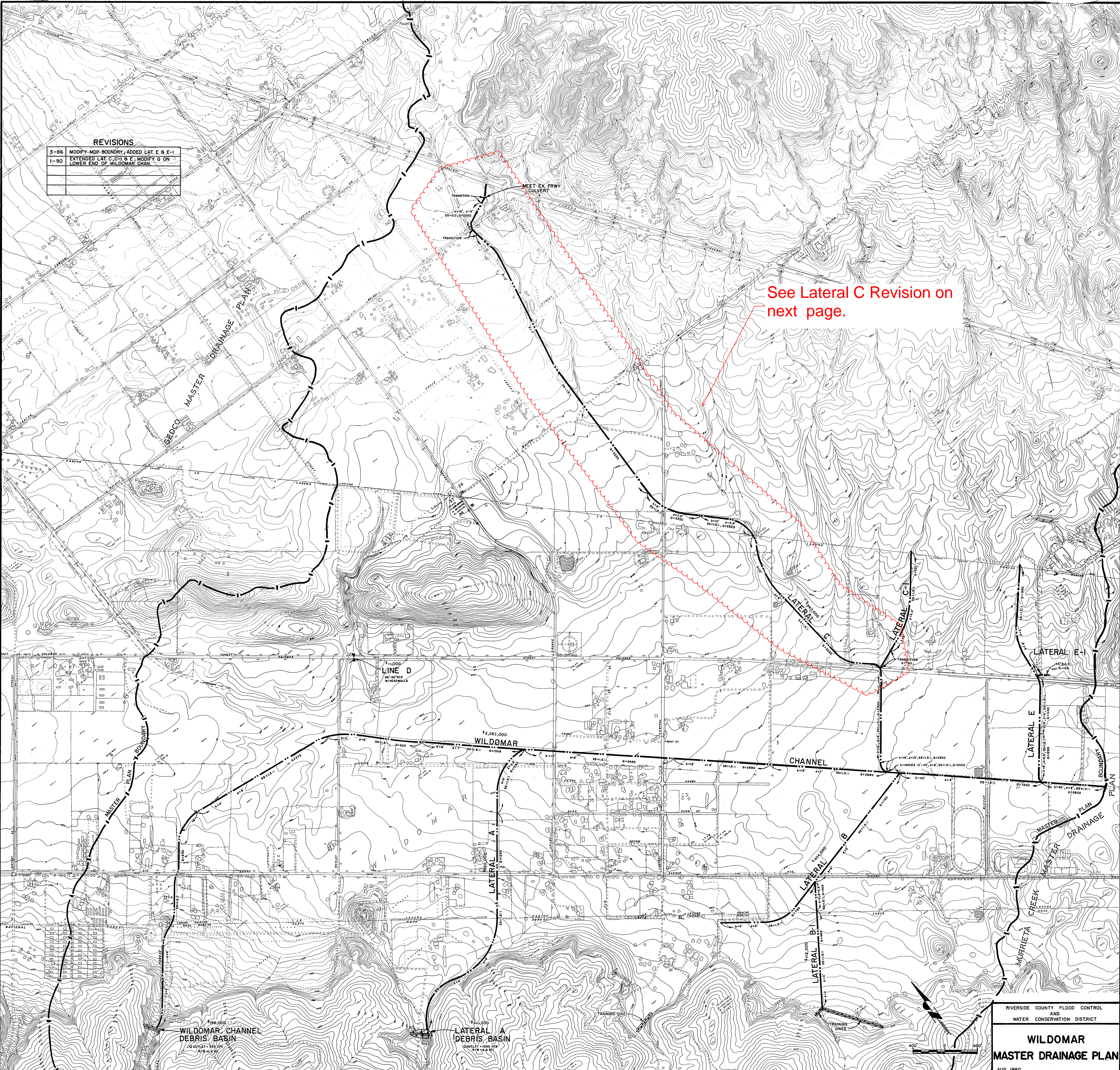


REVISIONS	
3-86	MODIFY MDP BOUNDARY, ADDED LAT. E & E-1
1-90	EXTENDED LAT. C, C-1 & E; MODIFY Q ON LOWER END OF WILDOMAR CHAN.

See Lateral C Revision on next page.



RIVERSIDE COUNTY FLOOD CONTROL AND WATER CONSERVATION DISTRICT  
**WILDOMAR MASTER DRAINAGE PLAN**  
 AUG. 1980



BUNDY CANYON ROAD

**Bundy Canyon Basin**

Flowthrough Basin  
 $Q$  in (3hr) = 2400cfs  
 Storage = 143.6 ac-ft  
 $R/W$  = 19.1 acres  
 $Q$  out = 1080cfs

14'x8' RCB  
 $Q=1080$

EXISTING CALTRANS  
 DBL 10'x6' RCB  
 $Q=1080$

DBL 10'x6' RCB  
 $Q=1080$

12'x6' RCB  
 $Q=1140$

60" RCP  
 $Q=220$

12'x6' RCB  
 $Q=1230$

60" RCP  
 $Q=270$

12'x6' RCB  
 $Q=1350$

12'x6' RCB  
 $Q=1350$

12'x6' RCB  
 $Q=1350$

12'x8' RCB  
 $Q=1510$

ROCK LINED CHANNEL  
 $b=24'$   $d$ -VARIES (9' to 10.65')  $ss=2:1$   
 $Q=1700$

SCALE 1"=400'



RIVERSIDE COUNTY FLOOD CONTROL AND WATER CONSERVATION DISTRICT

# WILDOMAR MDP LATERAL C REVISION (ALTERNATIVE 2A)

SEPT. 2016

## LEGEND

- DRAINAGE BOUNDARY
- EXISTING FACILITY
- PROPOSED STORM DRAIN
- PROPOSED OPEN CHANNEL
- PROPOSED BASIN
- PREVIOUS ALIGNMENT